

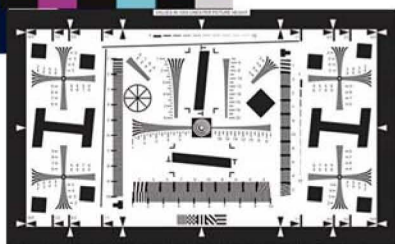
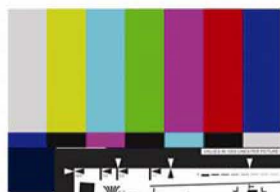
ProVision®

Leading Edge of Presentation

ProVision - Portable Series



High Resolution for Zooming
only ProVision - Portable Series



5 Elements of ProVision® Picture Quality

ProVision Visualizers have always been famous for their outstanding picture quality, which is due to a perfect mixture of high end components and remarkable know-how.

The picture quality of a Visualizer or camera can only be as good as its weakest component. The following 5 basic elements are responsible for perfect picture quality, as found on all ProVision units:



Camera Lens System

+

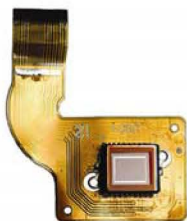


Image Sensor (CCD)

+



Professional Mainboard

+



Updatable Firmware

+



Lighting System

Perfect picture quality means high resolution throughout the whole picture (including the edges), lifelike colors, high frame rate, fast and precise auto focus, smooth zooming, an overall distortion free picture, even lighting without reflections or hot spots and much more.

ProVision' s high priority on perfect picture quality can be seen throughout the whole product line - from the entry level to the top of the line Visualizer.



| Technical Data | PVT-310P | PVT-320P |
|---|--|--|
| Camera | CMOS 1/3" Progressive Scan | CMOS 1/3" Progressive Scan |
| Picture per second (as picked up by camera) | 24 frames (Maximum) | 24 frames (Maximum) |
| Effective Pixel (=pixels actually used for image information) | 1280 x 1024 | 1280 x 1024 |
| Total pixels | 3,200,000 | 3,200,000 |
| Color reproduction / precision | very good colors (sRGB color precision) | very good colors (sRGB color precision) |
| Converted output signals (4:3 and 5:4) | SXGA (1280 x 1024), XGA (1024 x 768), SVGA (800 x 600), PAL and NTSC | SXGA (1280 x 1024), XGA (1024 x 768), SVGA (800 x 600), PAL and NTSC |
| Resolution (measured) | 750 TV lines | 750 TV lines |
| Image Rotation | Yes | Yes |
| Vertical image-frequency | 60Hz | 60Hz |
| Iris | automatic and manual | automatic and manual |
| White balance adjustment | automatic and manual | automatic and manual |
| Text Enhancer | Yes | Yes |
| Zoom / Lens | 96x zoom (12x optical + 8x digital) | 96x zoom (12x optical + 8x digital) |
| Tilt range of camera | 270° (180° to lecturer + 90° to audience) | 270° (180° to lecturer + 90° to audience) |
| Light source | long life high frequency LED lighting | long life high frequency LED lighting |
| Image memory | - | via USB |
| Computer input / input switch | one (15-pin D-Sub/VGA plug) | one (15-pin D-Sub/VGA plug) |
| Composite video input | - | - |
| Y/C Sperate (S-Video) output | - | one (S-Video) |
| Composite video output | - | one (RCA) |
| RGB output | one (15-pin D-Sub/VGA plug) | one (15-pin D-Sub/VGA plug) |
| USB port (for hand-wirting technology) | - | - |
| USB port (for USB Camera / Storage Disk) | - | one (USB 2.0) |
| Weight | 2.5 kg | 2.5 kg |
| Dimensions | folder (190mm x 340mm x 60mm) setup (190mm x 200mm x 640mm) | folder (190mm x 340mm x 60mm) setup (190mm x 200mm x 640mm) |
| Infrared remote control | Yes | Yes |
| Anti-theft device | T-Lock and table lock bolt (optional) | T-Lock and table lock bolt (optional) |
| Power (external power pack) | multi range 100-240V, 60W, weight: 0.3kg (0.6lbs) | multi range 100-240V, 60W, weight: 0.3kg (0.6lbs) |
| Warranty | 3 years | 3 years |

ProVision®

More information at:
www.suntechav.com.hk